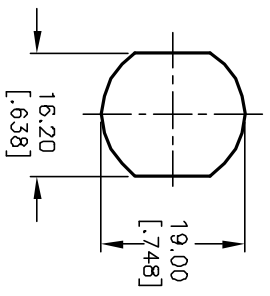


NOTES:

1. ALL DIMENSIONS IN MM [INCH]
2. GENERAL TOLERANCE: X.X=±0.4 X.XX=±0.25
3. TERM. NOS. FOR REF. ONLY
4. CONTACT RATING: 4A @125VAC/28VDC, 2A @250VAC
5. DIELECTRIC STRENGTH: 1KV RMS min. at sea level
6. ELECTRICAL LIFE: 10,000 make-and-break cycles at full load.
7. MATERIALS:
 CONTACTS: Silver Plated CU (Q Contact material)
 TERMINALS: GOLD Plated Cu (Q Contact material)
 MOUNTING NUT: Nickel Plated zinc alloy
 CONTACT SPRING: Piano Wire
 KEYS (2): Brass with code no. A126
 LOCK: Bright Ni plated zinc alloy with NI facing
 TUMBLER Mechanism: 4-disc tumbler cylinder.



RECOMMENDED PANEL LAYOUT

LEGEND

- =Detent Positions (45° or 90°)
- ⊙ =Key pull possible in these positions

CIRCUIT: SP (90 INDEXING)
 CONTACT CONFIGURATION

SWITCH FUNCTION		
CONNECTED TERMINAL #	POS. 1	POS. 2
3	1-3	6-7

REV.	ECN No.	DESCRIPTION	DATE	CHK'D
C	13056	DESC. WAS K0130Z4-A126	4/17/03	AR
B	12677	REV DESC/ WAS K0130D1,	12/27/02	CJB
-	12677	REVISED THD CALLOUT	12/27/02	CJB
A	11722	RELEASE FOR PRODUCTION	10/11/01	CJB

THE INFORMATION CONTAINED IN THIS DOCUMENT IS PROPRIETARY TO E-SWITCH AND IS NOT TO BE COPIED OR TRANSFERRED



K0130D1-A126

SCALE	DATE	DR	JWG	REV
1:1	10/11/01	CJB		C